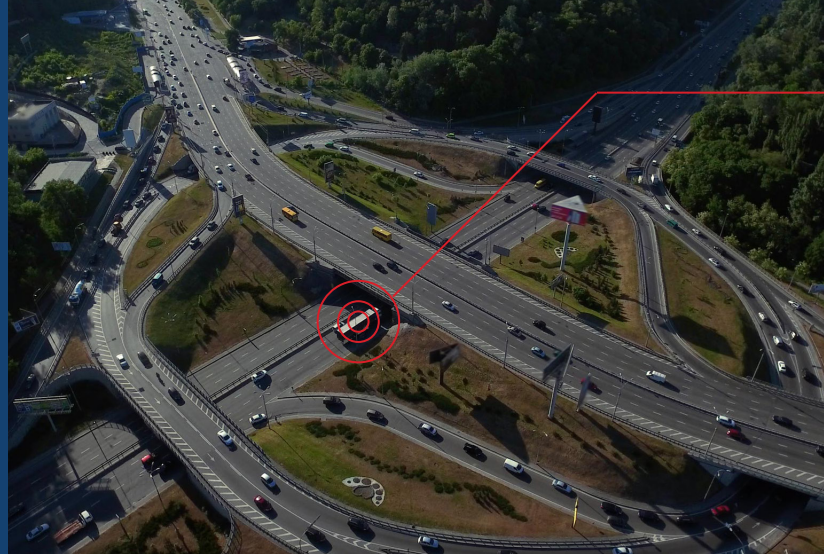




# LYTX<sup>®</sup> Surfsight<sup>™</sup> AI-14



## A durable device built for evolving needs

Introducing a next-generation dash cam that combines rugged hardware with cutting-edge technology to deliver unparalleled performance in fleet video telematics.

The Surfsight AI-14 camera represents a transformative evolution in video safety technology. It features increased processing power, more privacy settings, global certifications, MV+AI Gen 2 algorithms, and the only touchscreen available in its class. It's a powerhouse device redefining what fleets can expect from dash cam technology.



lytx<sup>®</sup>

Surfsight AI-14



### Built to last

Rugged construction and reliable performance built for the demands of the road—day in, day out.

### Designed to inform

ICaptures clear, actionable data to give the visibility and insights fleets need, when they need them.

### Ready for the world

Globally connected and regionally configured to fit fleets of every size, anywhere they operate.

# Engineered for excellence. Designed for durability.



## Product specs at a glance

### Camera lens

road-facing 1080p HD wide-angle camera, In-cab 1080p HD with integrated IR and adjustable viewing angle.

### Internal memory and external storage

8 GB eMMC internal memory, up to 512GB external storage supported

### GPS and WiFi systems

GPS and AGPS, WiFi support

### Network Support

LTE B2/B4/B12, WCDMA B2/B4/B5

## Display touchscreen

Harness a convenient touchscreen display for easy firmware access, feature management, and visual alerts.

## Accelerometer and gyroscope

Detect strong accelerations, harsh braking, cornering, or collisions with high accuracy.

## Auxiliary camera support

Enhance fleet visibility with up to four additional Surfsight cameras for greater clarity and control.

## Risky driving and event triggers

Stay aware through capture and support by Lytx accelerometer and G-force data

## Over-the-air updates

Ensure devices stay current with seamless, over-the-air firmware updates and bug fixes.

## About Eagle Wireless

Since 2006, Eagle Wireless is your single-source vendor for the very best solutions to help you manage your mobile workforce. These solutions include Vehicle and Asset Tracking, Dash Cameras, as well as Routing, Dispatching, and Compliance tools to streamline your business operations and improve efficiency. We leverage technology to help you reduce risk, improve efficiency, and increase your bottom line.



215.672.0575 | [www.eaglewireless.us](http://www.eaglewireless.us)